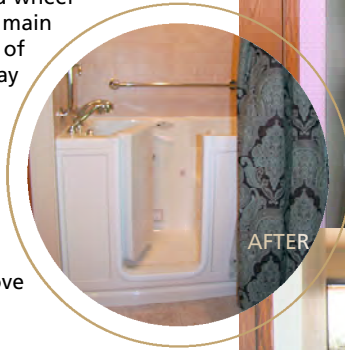


2009 COTY AWARD-WINNING PROJECTS

UNIVERSAL DESIGN

The homeowners wanted to create a suite area on the main floor for their 12-year-old daughter Anna, who has cerebral palsy. As Anna was growing, the accessibility issues of a 2nd floor bedroom and everyday activities was growing more difficult for this family. A 12' X 24' addition, housing a bedroom and wheelchair accessible bathroom, connected to the main living areas, brought Anna closer to the rest of the family and made interaction and everyday tasks far easier for everyone. By widening doorways and the foyer and moving the garage service door — to accommodate a ramp — we were able to make the entrance and main level far more conducive for wheelchair access. Re-configuring the front entry door and back patio doors with low profile sills improve Anna's ability to move freely between inside and outside.

- Widened entry hallway and doorways and added hardwood floors throughout main level, producing an updated look and better wheelchair mobility. A built-in bench and storage drawers give Anna self-sufficiency.
- A plumbing tempering valve that controls the bathroom waterlines has a control-able water temperature setting producing another layer of safety.
- Walk-In accessible tub/shower with a chromatherapy function that stimulates senses through heat. Several LED lights inside tub structure produce color variations in the water and the tub walls, and through controllable massage-intensity jets.



AFTER

"To see our efforts recognized in these important projects is very rewarding to all of us at College City and I am very proud of our team's efforts."

Darin Pavek
President
College City Companies

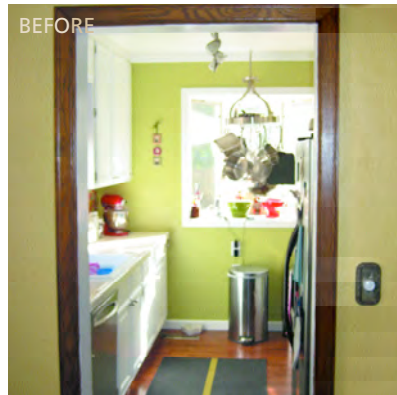
"The homeowners in St. Louis Park and Eagan were fabulous to work with and our team really felt they were part of important family initiatives."

Bjorn Freudenthal
VP-Sales and Marketing
2009 NARI National Representative

WHOLE HOUSE RENOVATION UNDER \$250,000

A single-story addition enhanced the kitchen/dining room floor plan, enabling the homeowners to gain space for entertaining as well as add some much needed storage space within the new kitchen. With these improvements, and an exterior facelift — adding architectural details to the front facade of the home — the homeowners were able to make their home stand out from the other one-and-a-half story homes surrounding them.

- The master bedroom was opened up and a 90sq. ft. walk-in closet was added.
- The kitchen and dining room were opened with a large archway, creating an informal eating area at the raised snack bar and opening sightlines throughout the entire space.
- Solid surface and butcher block countertops, contemporary backsplash tile, custom enameled cabinetry and additional lighting were utilized in upgrading this space.
 - Finishing touches such as cabinet door styles and custom cove moldings, paint colors and lighting styles create charm. The use of the dark slate grey paint, white trim, stained brackets and columns create drama.



AFTER



BEFORE